

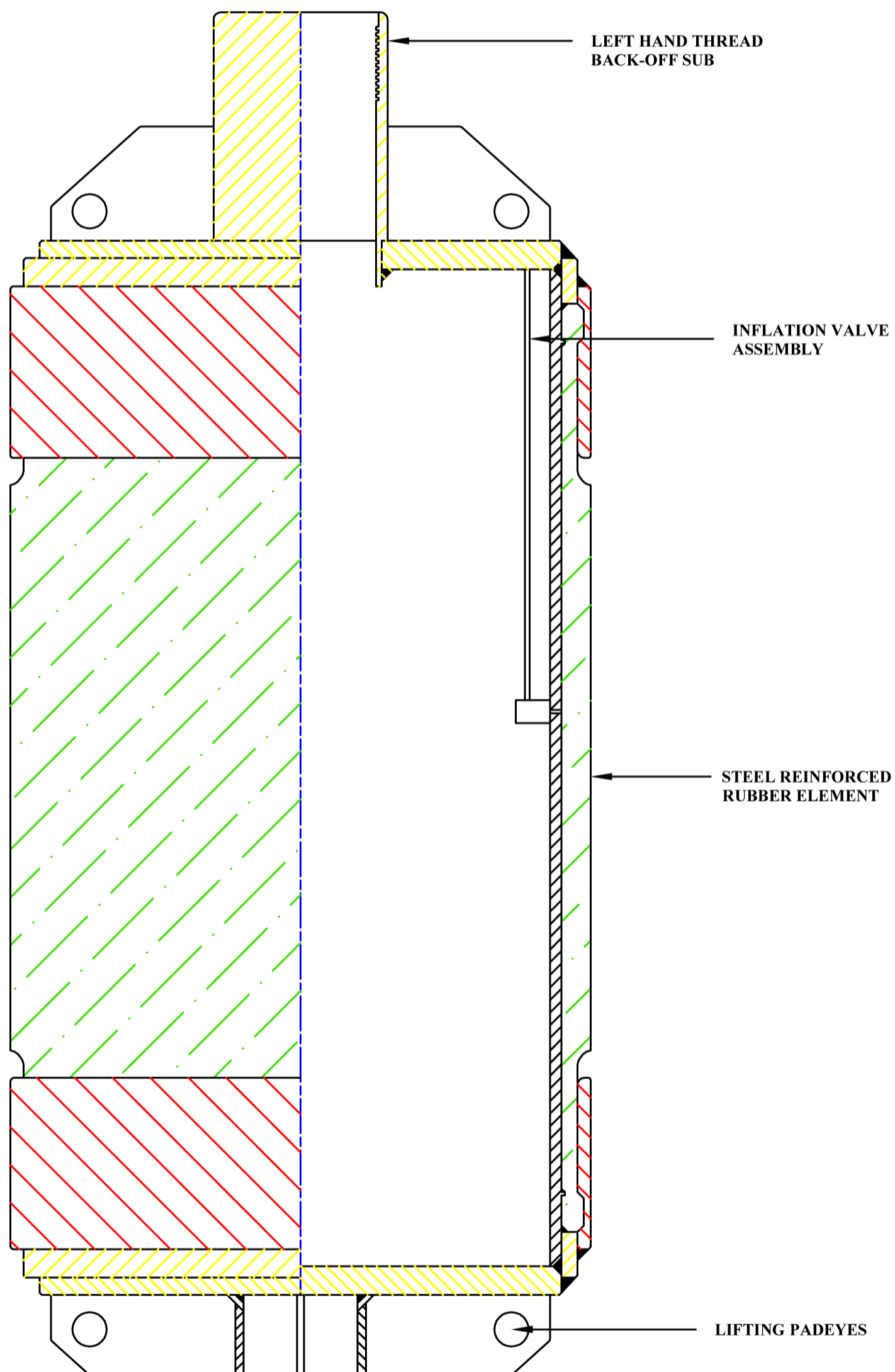


**Replacement  
Inflatable  
Packers &  
Elements PTY LTD**

www.ripe.com.au

## Inflatable Abandonment Packer Plug

- Can be set in casing or open borehole.
- Internal relief valve and set spring check valve prevents over inflation and shuts in positive pressure.
- Lifting pad eyes facilitate safe, rapid handling.
- Left hand thread back off sub for simple, reliable extraction of run-in drill rod.



ALL LENGTHS AND DIAMETERS AVAILABLE ON REQUEST